



Exclusive, vented Type II AccuFlow™ manifold with a Safe Squeeze® trigger handle provides the fastest smoothest, most controlled pouring. Patented.



Flexible 9-in (229-mm) hose on Type II AccuFlow™ offers targeted pouring into small openings.



Quick-fill port on Type II AccuFlow™ features an ergonomically designed lift lever that opens wide for easy filling.



Extra capacity in all cans accommodates oil additives for two cycle engines.



1/2-in (13-mm) grip lip along bottom supports pouring and resists accidental punctures when placed on uneven surfaces.



Stainless steel flame arrester stops flashback ignition. Long 3-1/2-in (88-mm) length offer safe secure insertion of gas nozzle.



Optional 2-position polypropylene funnel for Type I cans aids in pouring and folds down for compact storage and filling.



Large ID zone permits user labeling to avoid misuse, mishaps with incompatible mixtures, or to identify owner or department.

Safety in a Can!

Comfortable, rounded handle doesn't cut into hand.

Leakproof, positive pressure relief lid automatically vents to prevent rupture or explosion. It is spring-loaded to self-close controlling vapors and spills.

Type II **AccuFlow™**



Type I

Trilingual warning label

Free swinging handle with counter-balanced design leverages the weight of the can against the opening mechanism for easy pouring and carrying.

Reinforcing ribs strengthen walls to resist denting or implosion.

Double lock seams at base and top offer four thicknesses of steel for extra "bumper guard" protection.

24-gauge galvanized steel body and handle finished in an environmentally friendly, tough powder-coat finish resists solvents and stands up to abuse.

100% leak tested

Fully compliant—meets OSHA and NFPA



SAFETY CANS & CONTAINERS

for Flammables



Swinging, full-fisted rounded handle eases carrying.

Type I Safety Cans

Self-closing, leakproof lid provides safety from spills

Designed with a single spout for filling and pouring, the sealed lid features automatic positive-pressure relief that vents between 3 and 5 psig (0.2 and 0.35 bar) to guard against rupture or explosion.

Made from high-grade coated steel, each can is tested to guarantee 100% leakproof construction. The tough powder-coat finish resists chemicals and stands up to demands of rigorous use. Each Justrite safety can is equipped with a stainless steel flame arrester which dissipates heat to stop flashback ignition. Cans up to 1 quart (1 L) feature a trigger-release handle, while larger capacities have a swinging handle to greatly ease carrying of heavier loads. Large label ID zone on swing-handle cans provides writing space to identify contents, department location, or individual user name.

Certified by FM, UL/ULC, and TÜV, Justrite safety cans also meet OSHA and NFPA requirements, and come with a ten-year warranty.

Type I Safety Can Funnel

Used to pour into smaller openings, the polypropylene funnel attaches to the spout neck of Type I safety cans sized 1 gallon (4 L) and larger.

The two-position funnel folds down for when you fill or store the can, and stays up for when you pour. Large rounded bowl provides protection from splashing and spillage. Durable construction holds up to heavy use.



Convenient hinged design allows you to fill the can without removing the funnel.



10001 10101Z 10301Z



7125200Z

7150200Z



7150100Z



7125100Z



7120100Z



7110100Z

Description and Capacity	Dimensions OD x H	Approv/Lstg Regulation	Red Can Model No	Yellow Can Model No	Ship Wt lb/kg
Trigger Handle Type I Safety Cans					
1 pint (0.5 L) steel safety can	4.812 x 6.75 in 117 x 172 mm	FM, UL/ULC, TÜV	10001	10011Z	2/1
1 quart (1 L) steel safety can	4.812 x 8.25 in 122 x 210 mm		10101Z	10111Z	
1 gallon (4 L) steel safety can	7.25 x 11.5 in 184 x 292 mm	FM, UL/ULC	10301Z	—	4/2
Swinging Handle Type I Safety Cans					
1 gallon (4 L) steel safety can	9.5 x 11 in 241 x 279 mm	FM, UL/ULC, TÜV	7110100Z	7110200Z	4/2
2 gallon (7.5 L) steel safety can	9.5 x 13.75 in 241 x 349 mm		7120100Z	7120200Z	
2.5 gallon (9.5 L) steel safety can	11.75 x 11.5 in 298 x 292 mm		7125100Z	7125200Z	
5 gallon (19 L) steel safety can	11.75 x 16.875 in 298 x 429 mm		7150100Z	7150200Z	
Polypropylene funnel	.5 x 11.25 in 13 x 286 mm	—	11202Y	—	2/1
Replacement flame arrester for 1 pint (0.5 L) and 1 quart (1 L) only	—	—	11098	11098	
Replacement flame arrester for 1 gallon (4 L) and above	—	—	11007	11007	



for Flammables

Type II AccuFlow™ Safety Cans

Vented design provides smooth, slug-free liquid flow

Go beyond protection and compliance with the added convenience of AccuFlow™ with Safe-Squeeze® trigger for safe and controlled pouring.

Justrite's patented manifold and proportional flow-control Safe-Squeeze® trigger provides you the means to regulate the flow rate when handling flammable liquids. Fill port with ergonomic lift lever makes filling easy. Flexible 9-in (229-mm) long metal hose spout helps control the pour into small openings.

Made from high-grade coated steel, each can is pressure tested to ensure quality. The tough powder-coat finish resists chemicals and stands up to demands of rigorous use. Stainless steel flame arrester—equipped in all Justrite safety cans—dissipates heat to stop flashback ignition. Sealed lid features automatic positive-pressure relief that vents between 3 and 5 psig (0.2 and 0.35 bar) to protect against explosion. Large label ID zone provides writing space to identify contents, department location, or individual user name. All can sizes have extra capacity for adding two-cycle engine oil or other additives.

Certified by FM, UL/ULC, and TÜV, Justrite safety cans also meet OSHA and NFPA requirements, and come with a ten-year warranty.

Easy-to-fill!

Ergonomic lift lever opens the self-closing spout wide for easy filling. A full-length stainless steel flame arrester dissipates heat and allows deeper, secure insertion of the nozzle when filling.



Independent carrying handle doesn't interfere with pouring mechanism—no worry about accidental spills.



7250230Z



7250130Z

7225130Z

7210120Z

7220120Z



Description and Capacity	Hose Dimensions OD x L	Can Dimensions OD x H	Approv/Lstg Regulation	Red Can Model No	Yellow Can Model No	Ship Wt lb/kg
1 gallon (4 L) steel safety can with hose	0.625 x 9 in 16 x 229 mm	9.5 x 10.5 in 241 x 267 mm	FM, UL/ULC, TÜV	7210120Z	7210220Z	7/3
2 gallon (7.5 L) steel safety can with hose		9.5 x 13.25 in 241 x 337 mm		7220120Z	7220220Z	
2.5 gallon (9.5 L) steel safety can with hose	1 x 9 in 25 x 229 mm	11.75 x 12 in 298 x 305 mm		7225130Z	7225230Z	9/4
5 gallon (19 L) steel safety can with hose		11.75 x 17.5 in 298 x 445 mm		7250130Z	7250230Z	
Replacement flame arrester, stainless steel, for 1 gallon (4 L) and above	—	—	—	11007	11007	2/1

SAFETY CANS & CONTAINERS

for Laboratories



Tilt cradle allows can to swing forward for dispensing while holding can securely on bench top.

Safety Dispensing Cans

With all the benefits of our classic Type I safety cans (see page 4), these self-closing and leakproof cans come with faucets to make them the choice of lab professionals for safe dispensing of hazardous liquids into small flasks and beakers. Fill spouts have self-closing pressure-relief caps and stainless steel flame arresters. Self-closing brass faucets provide trouble-free dispensing. Cans fitted with the 08540 faucet offer more controlled dispensing, while faucet 08902 provides a greater flow.

Polyethylene Safety Dispensing Can has superb corrosion protection, and a unique current-carrying carbon insert embedded into the container allows for proper grounding.

Steel & Poly Shelf Cans have a faucet mounted 2-in (51-mm) above the bottom to eliminate the need to lift the cans during dispensing.

Steel Tilt Cans have a faucet on top and the can rests in a sturdy metal cradle. Cradle base measures 13-13/16 x 14-in (351-mm x 356-mm).

All styles are FM approved.



Store & secure chemicals . . .

For security against unauthorized use, store safety cans in lockable Sure-Grip® EX safety cabinets – see pages 45-52.



7150250



14545Z



7150156

7150140



Description and Capacity	Can Dimensions OD x H	Approv/Lstg Regulation	Red Can Model No	Yellow Can Model No	Ship Wt lb/kg
2.5 gallon (9.5 L) steel safety shelf can with bottom faucet 08540	11.75 x 11.5 in 298 x 292 mm	FM	7225140	—	9/4
2.5 gallon (9.5 L) steel safety shelf can with bottom faucet 08902	11.75 x 16.875 in 298 x 429 mm		7225150Z	7225250	
5 gallon (19 L) steel safety shelf can with bottom faucet 08540			7150140	7150240	
5 gallon (19 L) steel safety shelf can with bottom faucet 08902			7150150Z	7150250	
5 gallon (19 L) tilt steel safety can with top faucet 08540 and stand	11.75 x 15.875 in 298 x 403 mm	FM, UL	7150146	—	13/6
5 gallon (19 L) tilt steel safety can with top faucet 08902 and stand	7150156		—		
5 gallon (19 L) poly safety shelf can with self-close brass faucet 08540	11.5 x 17 in 292 x 432 mm	FM	14545Z	—	11/5

for Laboratories

Type I Poly Cans for Flammables

Chemical-resistant HDPE cans offer safe storage for flammable corrosives

Designed with a durable one-piece body construction, these safety cans stand up to tough acids and heat. Consistent color throughout the HDPE reduces visible scratches and provides color-resistance to reduce chemical leaching, making them suitable for most high purity liquids. The containers resist dents, punctures, and chips to withstand abusive environments. The self-closing cap, pressure-relief mechanism and flame arrester work together to prevent ignition sources from entering without restricting liquid flow in or out of the can. All cans feature stainless steel hardware and flame arrester. FM-approved.



14561



14160Z

14065Z



Carbon Insert

A patented conductive current-carrying carbon insert is embedded into the rib of containers, completing a ground path between the cover assembly and the flame arrester. When used with a grounding strip, this provides proper grounding and prevents the creation of a static arc during filling or pouring.



Description and Capacity	Dimensions W x L x H	Approv/Lstg Regulation	Model No	Ship Wt lb/kg
0.5 gallon (2 L) oval polyethylene safety can	4.625 x 7.625 x 9.5 in 117 x 194 x 241 mm	FM	14065Z	2/1
1 gallon (4 L) oval polyethylene safety can	4.625 x 7.625 x 12.75 in 117 x 194 x 324 mm		14160Z	
2.5 gallon (9.5 L) round polyethylene safety can	10.75 x 14.25 in 273 x 362 mm	FM, UL	14261	4/2
5 gallon (19 L) round polyethylene safety can	12.75 x 16 in 324 x 406 mm		14561	9/4

Self-Closing Containers for Non-flammable Corrosives

Improve safety and ensure containment with secure laboratory containers

Translucent high-density polyethylene resists acids and caustics. The 2- to 5-gallon (7.5- to 19-L) sizes have fixed position on handle, which allows lid to stay open for easy filling. Spring-close cap provides a tight seal. Flame arrester-free spout allows quick pouring of non-flammable corrosives. Oval containers have trigger handle for one-handed pouring and make the most of storage capacity.



12161

12765

Description and Capacity	Dimensions OD x H	Dimensions Spout Dia	Model No	Ship Wt lb/kg
1 gallon (4 L) oval polyethylene container with stainless steel hardware	4.625 x 7.625 x 12.75 in 117 x 194 x 324 mm	1.45 in 37 mm	12161	2/1
2 gallon (7.5 L) wide mouth polyethylene container with stainless steel hardware	12 x 14.75 in 305 x 375 mm	3.625 in 92 mm	12762	7/3
2.5 gallon (9.5 L) polyethylene container with stainless steel hardware	10.75 x 15.25 in 273 x 387 mm	1.45 in 37 mm	12260	
5 gallon (19 L) wide mouth polyethylene container with stainless steel hardware	12 x 20 in 305 x 508 mm	3.625 in 92 mm	12765	9/4

for Laboratories



Manifold kit provides a convenient, cost effective way to collect waste from multiple HPLC machines.

HPLC Safety Disposal Cans

Quick-disconnect fittings and coalescing carbon filters keep laboratory and personnel safe with a compliant, environmentally-friendly solution to waste collection

Ideal for HPLC waste applications:

- Vapor and fire protection
- Safeguard against accidental spills
- Maximize safety and convenience

Hands-free solvent collection: Solvent flows freely from your process into the container through tubing making it suitable for either pump-fed or gravity-flow HPLC waste methods. Two disconnect fittings, one intake and one vent, eliminate back pressure in liquid flow disposal line and provide controlled handling of vapor.

Durability and safety: Translucent polyethylene container allows quick visual inspection of liquid level. Pouring spout is equipped with a stainless steel flame arrester, which reliably dissipates heat to prevent flashback ignition. Spring-loaded, sealed lid automatically vents to guard against explosion. Control odors with a coalescing/carbon filter.



Quick-Disconnect system

Easy-on, easy-off mechanism offers detachment of the can from the process without leaks, drips or vapor release. Once disconnected, the container is automatically sealed to prevent spills.

Coalescing carbon filter
Optional filters are for use with only round style cans.

Optional manifold

Valved quick-disconnect fittings automatically close when decoupled to prevent vapor or liquid release.

Translucent color lets you check liquid level at a glance.

Oval-style maximizes storage space and features one-handed pouring from narrow 1-7/16-in (36-mm) spout.

Stainless-steel fittings offer PTFE O-rings on standard containers. Also available with EPDM or Viton O-ring seals on customized cans.

Easy-carrying handle with fixed position latch keeps spring loaded cover open for convenient pouring during disposal.

Economically priced polypropylene barbed fittings offer EPDM O-rings.

Large 3-5/8-in (92-mm) opening facilitates controlled pouring into larger vessels for proper hazardous waste disposal. Spout is equipped with a stainless steel flame arrester.

Meets OSHA, NFPA and EPA requirements.

Create custom cans, with up to eight ports, for multiple HPLC units. See our custom-can form online at justritemfg.com



Capacity	Dimensions OD x H	Fitting No 1 for Liquid Intake			Fitting No 2 for Vapor Release			Model No	Ship Wt lb/kg
		Material	O-Ring	Tubing* Size ID	Material	O-Ring	Tubing* Size ID		
1 gallon (4 L) oval can	7.75 x 5.25 x 12.75 in 197 x 133 x 324 mm	Polypropylene	EPDM	0.375 in 10 mm	Polypropylene	EPDM	0.375 in 10 mm	12160	2/1
2 gallon (7.5 L) round can	12 x 14.75 in 305 x 375 mm	Stainless Steel	PTFE		Stainless Steel	PTFE		TF12752	7/3
2 gallon (7.5 L) round can		Polypropylene	EPDM		Polypropylene	EPDM		PP12752	
2 gallon (7.5 L) round can		Stainless Steel	PTFE		Stainless Steel	PTFE		TF12755	
5 gallon (19 L) round can	12 x 20 in 305 x 508 mm	Polypropylene	EPDM		Polypropylene	EPDM		PP12755	11/5
5 gallon (19 L) round can		Stainless Steel	PTFE		Stainless Steel	PTFE		BY12755	
5 gallon (19 L) round can		Polypropylene	EPDM	Polypropylene	EPDM	PP12755			

* Tubing not supplied with containers.

for Laboratories

Coalescing Carbon Filters

Use with HPLC cans to minimize odor, and capture 99% of liquid particulates released in the form of gaseous vapor. Vent filter snaps conveniently into the quick-disconnect fitting. Carbon filter cartridge color indicator beads (top portion) changes from purple to black to indicate when replacement is necessary. Replace the coalescing filter (bottom portion) after three or four carbon filter cycles. Use filters with all 2-gallon (7.5-L), 5-gallon (19-L) and custom-built quick-disconnect cans; not for use with oval style can. Meets EPA 40 CFR 264.173.



Filter Replacement Window



28161

28162

Description	Attachment/Use With	Model No	Ship Wt lb/kg
Coalescing/carbon filter combo with stainless steel fittings	Disconnect cans with stainless steel fittings	28162	2/1
Coalescing/carbon filter combo with polypropylene fittings	Disconnect cans with polypropylene fittings	28161	

Carbon Filter Replacements

Description	Attachment/Use With	Model No	Ship Wt lb/kg
Colormetric/carbon filter 3-Pack replacements	28162 or 28161 Coalescing/carbon filter	28157	2/1

NOTE: When using HPLC carbon filter with FM approved Justrite safety disposal can, the Justrite safety disposal container has not been FM approved or tested in assembly with the HPLC filter attached. However, the container does comply with US OSHA 1910 and NFPA Code 30 requirements, both with and without the HPLC filter. Do not transport safety container while carbon filter is attached.



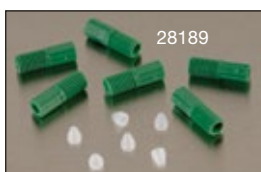
28157

HPLC PTFE Manifold and Compression Fittings

Enables up to six waste lines (per manifold) from HPLC processes to be fed into a single intake fitting. Safety container with manifold installed is OSHA compliant and meets NFPA Code 30. Use on round containers; not for use on oval style can.



28178



28179



Manifold no. 28177 with stacker no. 28179 and tubing connector package nos. 28188 and 28189.

Description	Attachment/Use With	Model No	Ship Wt lb/kg
PTFE manifold with stainless steel fitting	Containers with stainless steel fittings	28177	2/1
PTFE manifold with polypropylene fitting	Containers with polypropylene fittings	28178	
PTFE manifold with stainless "stacker" connector	28177 or 28178	28179	
OD 0.0625 in hard wall ETFE tubing compression fittings with ferrules (package of six - blue)		28188	
OD 0.125 in hard wall ETFE tubing compression fittings with ferrules (package of six - green)		28189	
OD 2 mm hard wall ETFE tubing compression fittings with ferrules (package of six - yellow)		28121	
OD 2.5 mm hard wall ETFE tubing compression fittings with ferrules (package of six - orange)		28122	
OD 3 mm hard wall ETFE tubing compression fittings with ferrules (package of six - red)		28123	

Polytetrafluoroethylene (PTFE) is a synthetic fluoropolymer. Eethylene tetrafluoroethylene (ETFE) is a fluorine based plastic.



84003 with TF12755

Spill Basin

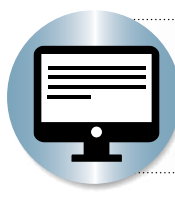
Durable polyethylene basin keeps work area clean around HPLC cans and captures any inadvertent leakage from HPLC inflow tubes.

Description	Dimensions W x L X H	Model No	Ship Wt lb/kg
5 gallon (19 L)	14.875 x 14.875 x 7.625 379 x 379 x 194 mm	84003	4/2



Need a stainless steel manifold?

For containers with stainless steel fittings, use a stainless steel manifold that accepts 4 waste lines. Visit our website and search model no. 28168.



Custom made safety disposal cans . . .

Design your own 2- or 5-gallon can with up to 8 fittings. Visit our website and search on "custom HPLC."

SAFETY CANS & CONTAINERS

for Waste Liquids



Large opening with cap held open provides convenient filling and pouring.

Liquid Disposal Safety Cans

A better solution for the containment of liquid flammable or corrosive waste

High-density polyethylene (HDPE) disposal cans provide superior chemical resistance and leak protection. Spring-loaded sealed cap, normally closed, automatically vents between 3 and 5 psig (0.2 and 0.35 bar). Stainless steel handle and hardware with latch-catch system hold the cap in the open position for easy filling and pouring. Large-mouth opening features a built-in stainless steel flame arrester to guard against outside ignition. Current-carrying, patented carbon insert embedded in the container allows for proper grounding. The broad-base design provides stability and resists accidental tip over.

Model 14265 with built-in polyethylene fill gauge indicator pops up to warn you that the container is almost full.



14762Z



14265



12754



Description and Capacity	Dimensions OD x H	Approv/Lstg Regulation	Model No	Ship Wt lb/kg
2 gallon (7.5 L) red polyethylene can with stainless steel hardware with 08530 fill gauge built-in	12 x 14.75 in 305 x 375 mm	FM	14265	7/3
2 gallon (7.5 L) liter red polyethylene can with stainless steel hardware			14762Z	
2 gallon (7.5 L) liter white polyethylene can with stainless steel hardware			12751	
5 gallon (19 L) liter red polyethylene can with stainless steel hardware	12 x 20 in 305 x 508 mm	FM	14765Z	11/5
5 gallon (19 L) liter white polyethylene can with stainless steel hardware			12754	
Replacement flame arrester, stainless steel	—	—	11406	2/1

Countertop Lab Tray

Polyethylene tray catches drips or spills and keeps counter clean and uncontaminated. Slightly curved edge and ribbed bottom keeps containers from sitting in pooled liquid.

Description	Nominal Dimensions L x D	Model No	Ship Wt lb/kg
Countertop lab tray	31.125 x 18.5 in 791 x 470 mm	29965	4/2



for Waste Rags and Wipes

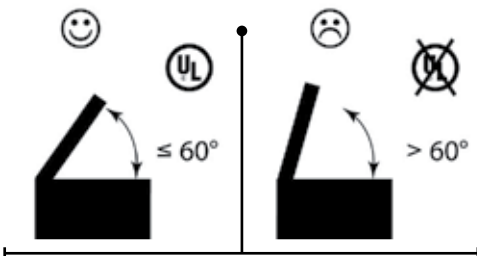
Oily Waste Cans

Dispose of oil-soaked rags and prevent fires caused by stray sparks or spontaneous combustion

Rags and cloths soaked with solvents, thinners, linseed oil, combustible adhesives and other flammable liquids present a serious fire risk when improperly discarded. Lid opens to no more than 60 degrees and stays closed when not in use, isolating contents from fire sources and limiting oxygen to virtually eliminate the risk of spontaneous combustion. Round construction and elevated base allow circulation of air around can to disperse heat and reduce moisture build-up and rusting. Durable steel construction with a powder-coat finish provides chemical resistance. Approved by FM, UL, and TÜV. All cans carry a ten-year warranty.

SoundGard™ oily waste cans include a sound muffling pad inside lid to reduce lid-closure noise by nearly 200% over standard models. Ideal for laboratories or anywhere it is desirable to lessen disruptive noise.

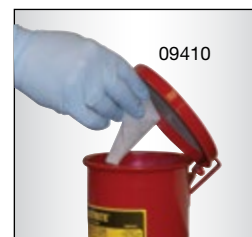
Lid opens no more than a 60° angle as required by UL.



Lid opens no more than a 60° angle as required by UL.



Use colors to identify and segregate different wastes.



Sound-muffling SoundGard™ lid significantly reduces noise closure.



Description and Capacity	Dimensions OD x H	Approv/Lstg Regulation	Red Can Model No	Yellow Can Model No	Ship Wt kg
Oily Waste Cans					
8 liter countertop oily waste can	244 x 232 mm	FM	09200	09200Y	3
20 liter oily waste can with foot-operated cover	302 x 403 mm	FM,UL,TÜV	09100	09101	5
34 liter oily waste can with foot-operated cover	354 x 464 mm		09300	09301	
52 liter oily waste can with foot-operated cover	408 x 514 mm		09500	09501	7
80 liter oily waste can with foot-operated cover	467 x 595 mm		09700	09701	10
SoundGard™ Oily Waste Cans					
1.7 liter mini bench top oily waste can	117 x 165 mm	FM	09410	—	3
20 liter oily waste can with foot-operated cover	302 x 403 mm	FM,UL,TÜV	09108	09104	5
34 liter oily waste can with foot-operated cover	354 x 464 mm		09308	09304	

SAFETY CANS & CONTAINERS

for Cleaning and Dispensing



Efficiently wet wipes with a simple pump action.

Safety Plunger Cans

Moisten cleaning cloths quickly and easily—smart-pump brings more liquid to the top and requires less time between refills

Dispense flammable liquids and solvents safely, without waste or exposure. Made of chemically resistant Ryton® and brass, the pump base is designed to leave less liquid in the bottom before having to refill.

Pushing down on the pump assembly fills the upper pan with liquid. Surplus liquid drains safely back into reservoir. The perforated upper pan serves as a flame arrester. Top rim has molded edge protector for smooth, trouble-free moistening.



Description and Capacity	Dasher Assembly	Smart-Pump Assembly	Dasher Dia	Dimension OD x H	Approv/Lstg Regulation	Red Model No	Yellow Model No	Ship Wt lb/kg
1 pint (0.5 L) steel plunger can	steel	brass & Ryton®	2.75 in (70 mm)	4.875 x 5.25 in 125 x 133 mm	FM, TÜV	10008	10018	1/1
1 quart (1 L) steel plunger can			7.25 x 5.625 in 185 x 143 mm	10108		10118	2/1	
2 quart (2 L) steel plunger can			7.25 x 7.875 in 185 x 200 mm	10208		10218	4/2	
1 gallon (4 L) steel plunger can			7.25 x 10.5 in 185 x 267 mm	10308		10318		
1 quart (1 L) polyethylene plunger can	brass		5.5 x 8.25 in 141 x 210 mm	14018Z		–	2/1	

Ryton® is a registered trademark of Chevron Phillips Chemical Company.

Polyethylene Dispensing Cans and Squeeze Bottles

Dispensing Cans permit easy, one-hand dispensing of liquids directly onto work surface. Leakproof, self-closing, brass dispenser valve minimizes spills and controls excess. FM Approved brass valves are ideal for use with flammables. Textured, high-density polyethylene body provides a firm grip.

Squeeze Bottles made of polyethylene with a stainless steel wire, provide safe dispensing of flammable liquids directly on small components or subassemblies with a minimum of over-spray. Squeezing the bottle produces a fine stream of liquid. Stem can be shaped to dispense into hard-to-get areas. Squeeze bottles are intended for daily use only.



Description and Capacity	Dimension OD x H	Spout Opening ID	Approv/Lstg Regulation	Model No	Ship Wt lb/kg
4 ounce (0.12 L) polyethylene dispenser can, translucent	2.25 x 5.5 in 57 x 140 mm	0.25 in (6 mm)	FM	14002	2/1
8 ounce (0.24 L) polyethylene dispenser can, red	3.125 x 5.5 in 79 x 140 mm			14004	
8 ounce (0.24 L) polyethylene dispenser can, translucent				14005	
1 quart (1 L) polyethylene dispenser can, red	4 x 10.5 in 102 x 267 mm			14010	
1 quart (1 L) polyethylene dispenser can, translucent	3 x 7.5 in 76 x 191 mm	–	–	14012	14009
1 pint (0.5 L) polyethylene squeeze bottle with flexible dispensing tube, translucent				14011	
1 quart (1 L) polyethylene squeeze bottle with flexible dispensing tube, translucent	3.5 x 9.125 in 89 x 232 mm	–	–	–	–

for Cleaning and Dispensing

Dip Tanks

Use for cleaning parts and subassemblies where the volume of work does not warrant a larger rinse tank. Portable size accommodates changing production requirements. Dip tank covers stay open for convenient access; self-closing mechanism and fusible link melts at 165°F (74°C) to snap the cover shut in case of fire. Dip tank with polyethylene liner offers outstanding chemical resistance to permit use with the harsh, corrosive chemicals.



27616

27612

27602

Description and Capacity	Dimension OD x H	Approv/Lstg Regulation	Red Model No	Yellow Model No	Ship Wt lb/kg
1 gallon (4 L) steel dip tank	9.375 x 5.5 in 238 x 140 mm	FM, TÜV	27601	27611	4/2
2 gallon (8 L) steel dip tank	9.375 x 10 in 238 x 254 mm		27602	27612	7/3
5 gallon (19 L) steel dip tank	13.75 x 13 in 349 x 330 mm		27605	27606	11/5
5 gallon (19 L) steel dip tank with HDPE liner		FM, TÜV	27615	27616	
8 gallon (30 L) steel dip tank	15.625 x 14.25 in 397 x 362 mm	FM, TÜV	27608	27618	13/6

Accessory Parts

Description	Dimensions: OD x H	Model No
Parts basket for dip tanks 27602, 27612	7.125 x 3 in 181 x 76 mm	27901Z

Bench Cans

An easy means of cleaning small parts in solvent, simply place work on spring-loaded, perforated dasher plate, press down and agitate, then release to return dasher to drain position. Plated steel dasher also works as an effective flame arrester to reduce the risk of fire flashback. Hinged cover minimizes evaporation losses and protected rim reduces the possibility of hand injury.



10291

10578

10375 with 11171

Description and Capacity	Dasher Diameter	Dimension OD x H	Approv/Lstg Regulation	Red Model No	Yellow Model No	Ship Wt lb/kg
1 quart (1 L) steel bench can	4.5 in 114 mm	4.875 x 5.5 in 124 x 140 mm	FM, TÜV	10175	10171	2/1
2 quart (2 L) steel bench can	7.5 in 191 mm	9.375 x 3.25 in 238 x 83 mm		10295	10291	4/2
1 gallon (4 L) steel bench can		9.375 x 4.5 in 238 x 114 mm		10375	10385	
2 gallon (8 L) steel bench can	9.75 in 248 mm	11.5 x 5.875 in 292 x 149 mm		10575	10578	9/4
Basket for 10375Z, 10385, 10575Z, 10578		6.4375 x .4375 in 164 x 11 mm	—	11171	—	1/1

Floor Standing Rinse Tanks

Self-close cover, operated by foot-treadle, allows a worker to open with both hands full. An adjustable-rate pneumatic cylinder prevents the cover from slamming shut when the treadle is released. Drain plug allows for easy solvent replacement.



Description and Capacity	Dimensions W x D x H	Overall Height	Approv/Lstg Regulation	Red Model No	Yellow Model No	Ship Wt lb/kg
22 gallon (83 L) steel floor standing rinse tank	32.75 x 16 x 12 in 832 x 406 x 305 mm	33 in 845 mm	FM	27220	27221	36/16

Accessory Parts

Description	Dimensions: L x W x D	Model No
Parts basket for rinse tank models 27220, 27221	28 x 13 x 4 in (711 x 330 x 102 mm)	27005
Sediment screen for rinse tank models 27220, 27221	35 x 13.75 x .75 in (889 x 349 x 19 mm)	27006

