



Filter single phase with very high attenuation for professional and industrial application.

Filtri monofase ad altissima attenuazione per applicazioni professionali ed industriali.

Technical Specifications:

Manufacture

Metal case, internal components sealed with self-extinguishing resin Vo

Connections

Screws M5 or M6
 Ground terminal connected to case

Electrical specifications:

Rated voltage (Vr)	max. 250 Vac at 400Hz
Rated current (Ir)*	referred to room temp.= 40°C
Leakage current (Il)	≤ 3,5 mA ≤ 10 mA models ●
Voltage test (2s.)	line to ground 3000 Vdc or 1800 Vac line to line 1700 Vdc
Climatic category	HPF (25/085/21) -25°C to +85°C

Caratteristiche tecniche:

Costruzione

Custodia metallica, componenti interni sigillati con resina autoestinguente Vo

Terminali

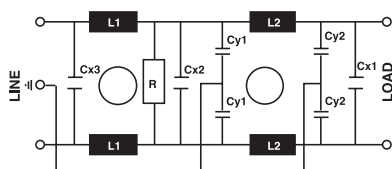
Viti da M5 o M6
 Terminale di terra collegato alla custodia

Caratteristiche elettriche:

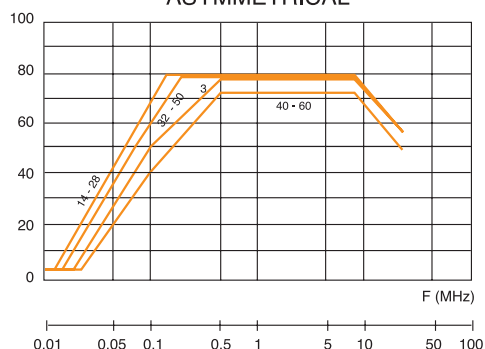
Tensione nominale (Vr)	max 250 Vac a 400 Hz
Corrente nominale (Ir)*	riferita ad una temp.di 40°C
Corrente di fuga (Il)	≤ 3,5 mA ≤ 10 mA modelli ●
Tensione di prova (2s.)	linea e massa 3000 Vdc o 1800 Vac linea e linea 1700 Vdc
Categoria climatica	HPF (25/085/21) -25°C to +85°C

Code	IR(A)*	Cx1(µF)	Cx2(µF)	Cx3(µF)	Cy1(pF)	Cy2(pF)	L1(mH)	L2(mH)	R(MΩ)	Case
AR35.3.135	3	0.68		0.68	22000	10000	4	4	1	F2
AR35.14.135	14	0.68		0.68	22000	22000	7	7	1	F6
AR35.28.135	28	0.68		0.68	22000	22000	7	7	1	F11
AR35.32.135 ●	32	10		10	47000	47000	0.5	0.5	1	F11
AR35.40.135	40		1.4	1.4		22000	1.2	1.2	1	F7
AR35.50.135 ●	50	10		10	47000	47000	0.5	0.5	1	F7
AR35.60.135	60		20	2.0		22000	1.2	1.2	1	F7

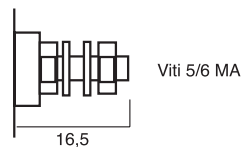
Circuit diagram



ASYMMETRICAL



Available connection



APPROVALS



Dimensions:

See the page Dimensions
 Consultare la pagina Dimensioni